

Windows Remote Desktop Support

How to use Remote Desktop to login to your computer

Using the VPN (*for any University Computers, or laptops this may already be installed*).

Navigate to the **OIT** page for **VPN**

<https://www.oit.uci.edu/help/vpn/>

Choose your distribution

Note: Examples will be for Windows

3 Ways to Access the VPN



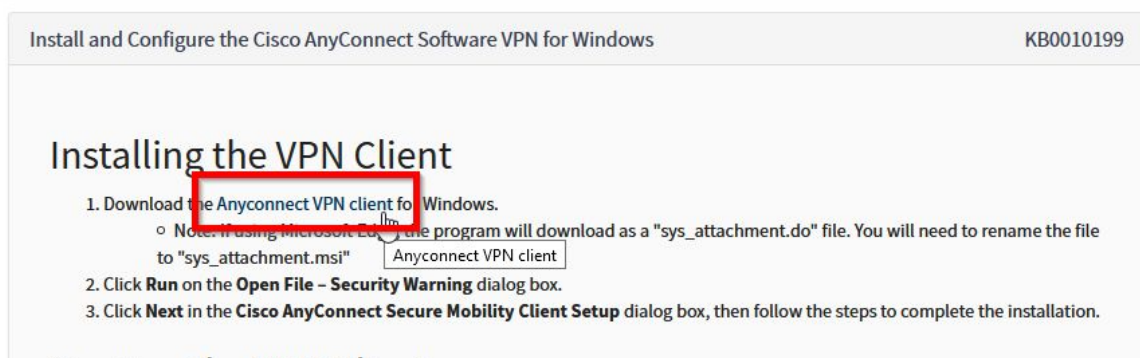
Software VPN iOS, Android, Chromebook WebVPN

Download, install and configure the Software VPN Client

- [macOS](#) (Recommended Version 10.13 High Sierra or newer - see bel
- [Windows](#)
- [Linux](#)

VPN Software Version

Download the **Cisco Any Connect** Software



Install and Configure the Cisco AnyConnect Software VPN for Windows KB0010199

Installing the VPN Client

1. Download the Anyconnect VPN client for Windows.
 - Note: If using Microsoft Edge, the program will download as a "sys_attachment.do" file. You will need to rename the file to "sys_attachment.msi"
2. Click **Run** on the **Open File - Security Warning** dialog box.
3. Click **Next** in the **Cisco AnyConnect Secure Mobility Client Setup** dialog box, then follow the steps to complete the installation.

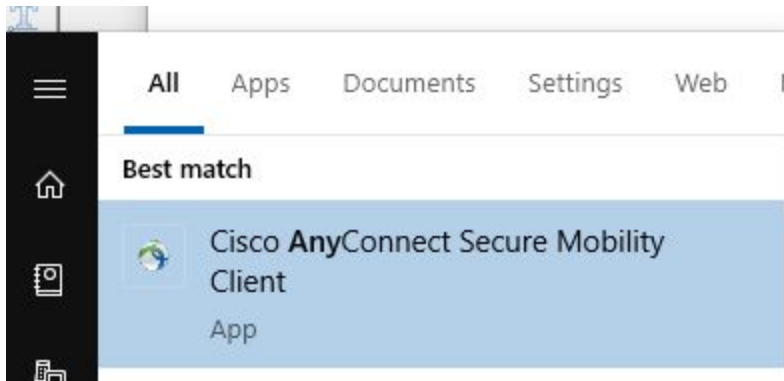
Install the software with default settings.

Updated: March 13, 2020

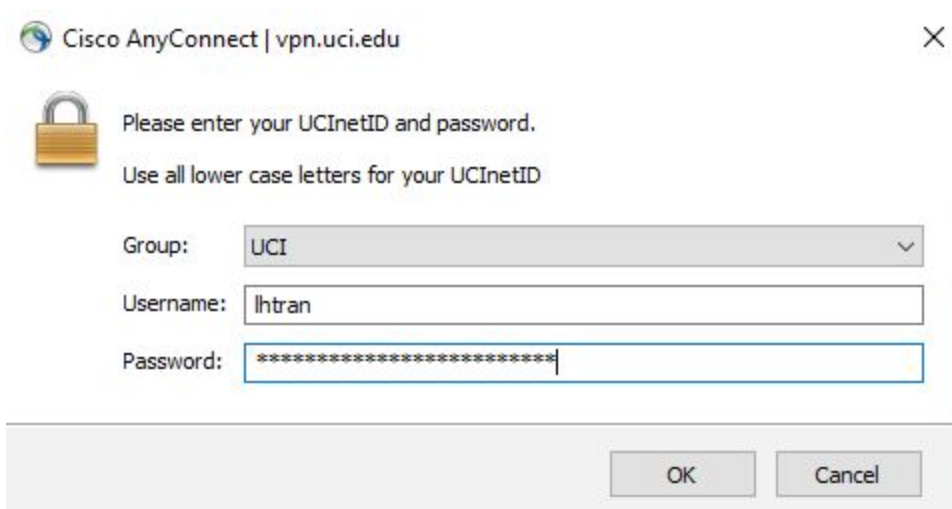
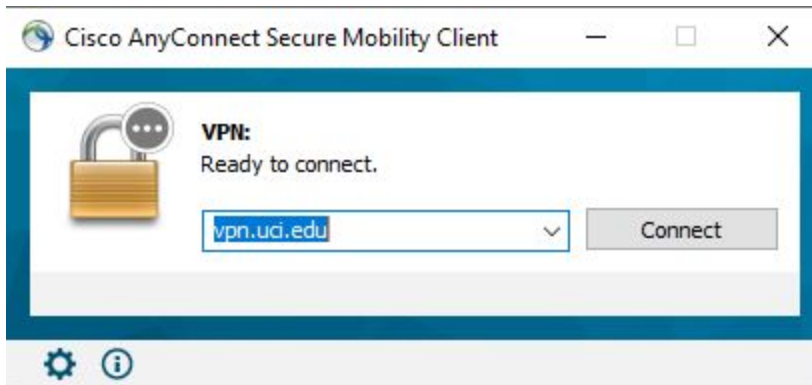
Windows Remote Desktop Support

How to use Remote Desktop to login to your computer

Open **Cisco AnyConnect Secure Mobility Client**



Configure the software using **vpn.uci.edu** as the address

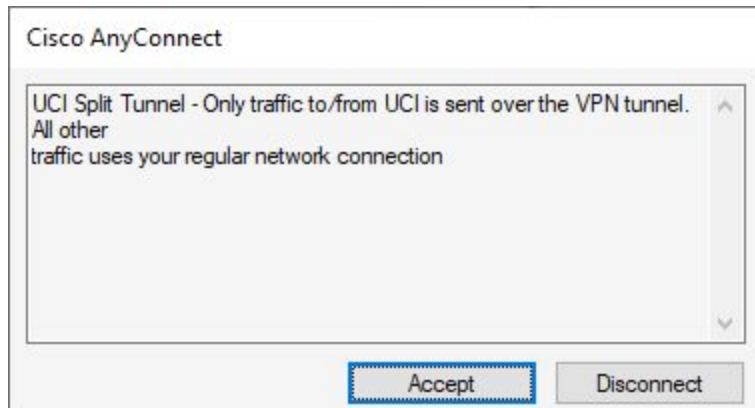


Updated: March 13, 2020

Windows Remote Desktop Support

How to use Remote Desktop to login to your computer

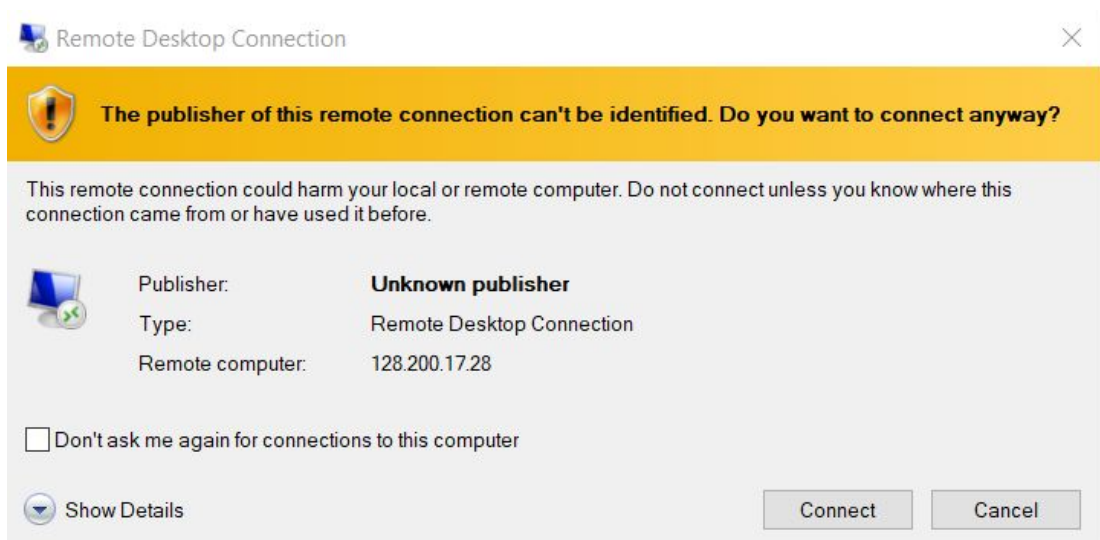
When prompted with the notification banner, hit **Accept**



You are now connected to the UCI VPN - it will run in the background while your session is open (nothing more to do with this).

Using Remote Desktop

1. SE Computing should've given you a custom Windows Remote Desktop file named "yourusername.rdp".
2. Once the VPN is running, you can double click to run the RDP file:

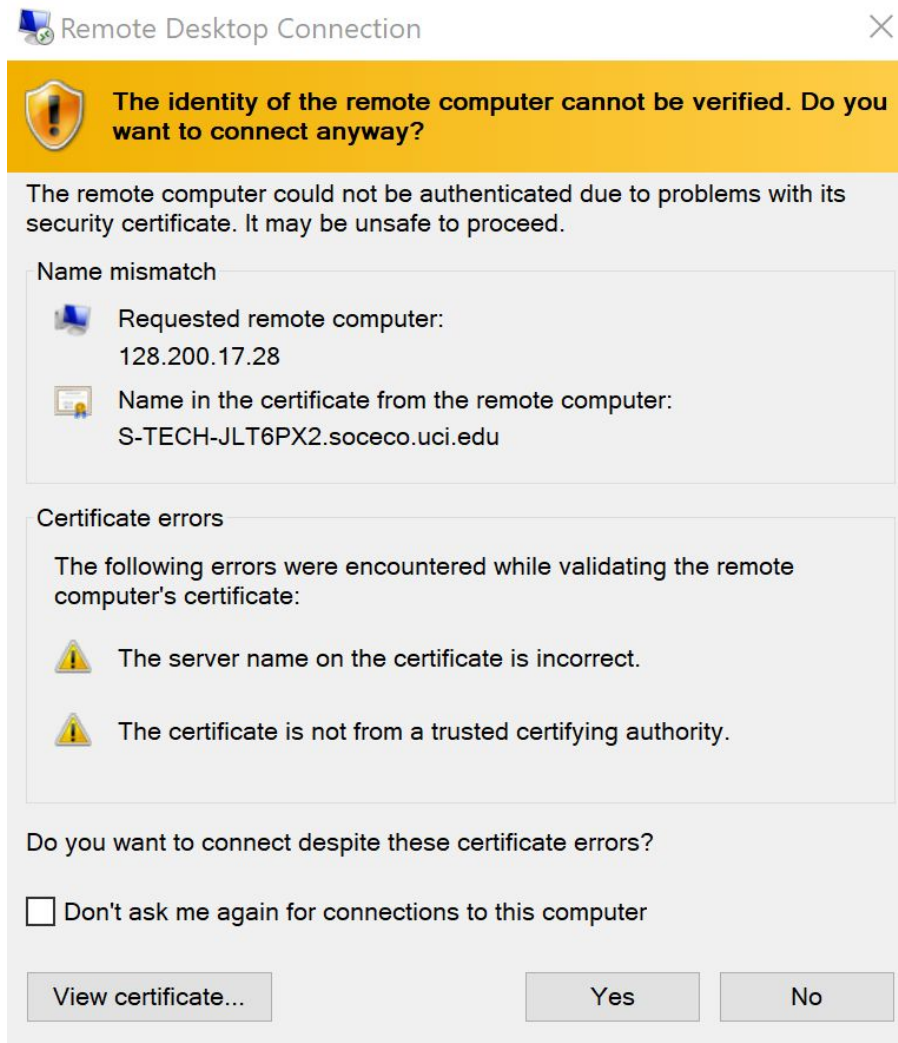


Updated: March 13, 2020

Windows Remote Desktop Support

How to use Remote Desktop to login to your computer

3. Click the “Connect button.

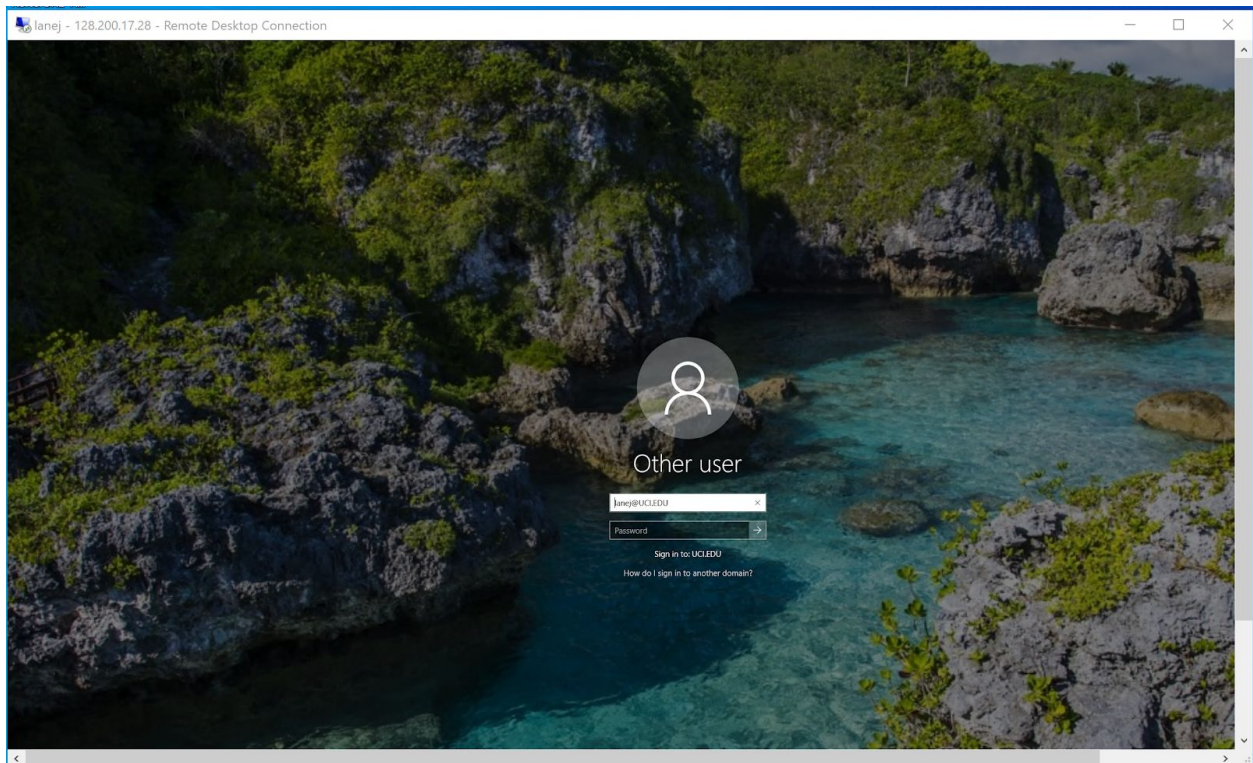


4. When you get the “identity cannot be verified” screen, click on the Yes button.

It should show you a copy of your desktop computer background screen with the login instructions listed like this:

Windows Remote Desktop Support

How to use Remote Desktop to login to your computer



5. Once this screen appears you can log in with your UCI credentials the way you normally would.

Updated: March 13, 2020